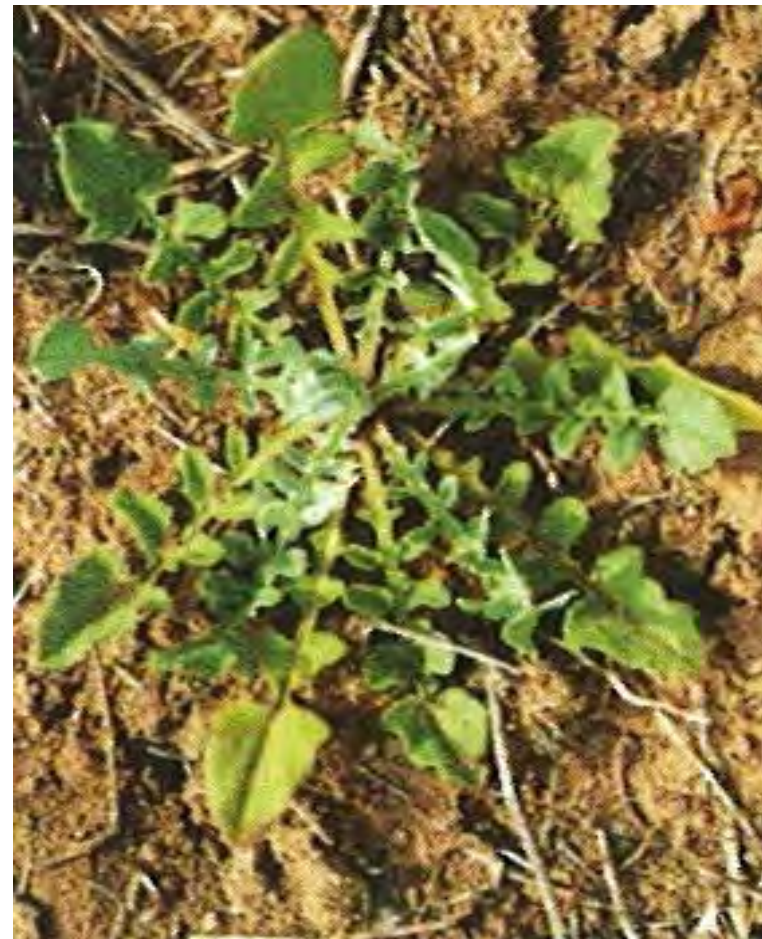
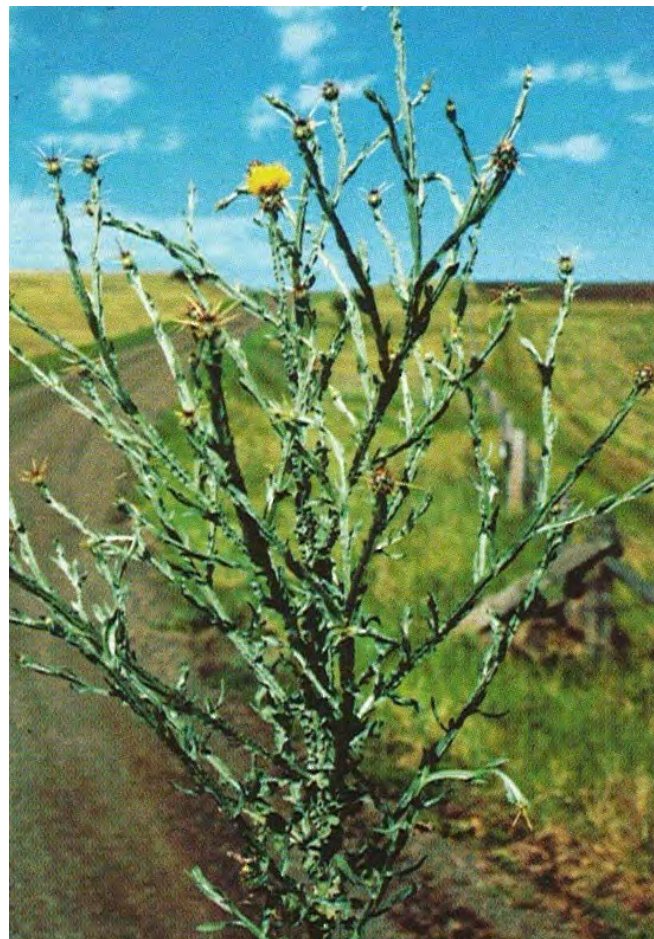


Starthistle, Yellow
Centaurea solstitialis
Asteraceae (Sunflower Family)

Category:

Prohibited Noxious



- **Life cycle:** Annual.
- **Root:** Taproot.
- **Leaves:** Rosette leaves are deeply lobed with pointed tip. Stem leaves are vertical, flat extensions along the stem and covered with cottony hairs.
- **Stems:** Up to 1.5m tall, rigid.
- **Flower:** One yellow flower head per branch. Sharp, straw-colored spines up to 5mm long radiate from the bracts. Meter seed dispersal, a cottony tuft remains on stem.
- **Seed/Fruit:** Light to dark-coloured with or without bristles.
- **Toxic:** Horses.
- **Control:** long term, hand pick, chemical before seed set.