

June 2021

Volume 15, Issue 3



M.D. of Wainwright
Weed

Inspectors

Division 1 & 2 :

Ray Enstrom,
780-842-8461

Division 3, 4 & 5:

Laine Maron
780-842-8579

Division 5, 6 & 7:

Dennis Fuder
780-842-7060

Start thinking about the 2021 Calendar Contest! The M.D. of Wainwright's annual calendar photo contest is fast approaching. Submissions are due August 13, 2021. Showcase the diversity in the M.D. of Wainwright. Can't wait to see your submission this year!

The M.D. of Wainwright still has 2% Liquid Strychnine available to producers. Sales will continue every Tuesday from 1:00p.m.— 3:00p.m. at the M.D. Rec. Shop until the end of June or while supplies last. If we still have inventory after June 30th, sales will be by appointment only.

Municipal District of Wainwright No.61

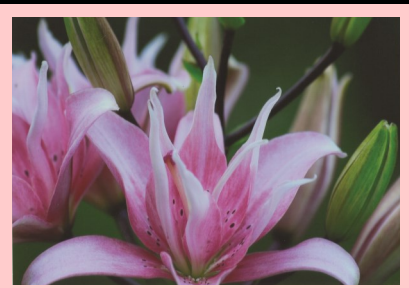
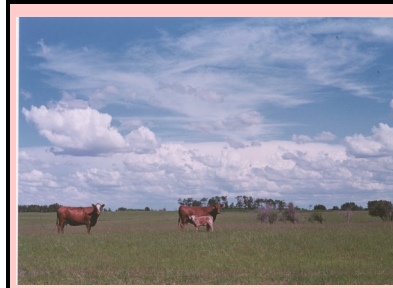
The Municipal Agricultural Connection

Alberta Agriculture and Forestry



Partners in Rural Conservation

www.mdwainwright.ca



WAINWRIGHT REGIONAL LANDFILL GRAIN BAG & TWINE RECYCLING PROGRAM

WE ARE PLEASED TO ANNOUNCE WE ARE NOW ACCEPTING GRAIN BAGS AND TWINE AS PART OF THE "RECYCLE IT" PROGRAM

Hours of Operation:

Monday - Friday
8:00am - 4:45pm
Saturday
8:00am - 3:45pm

FOLLOW THESE 3 STEPS TO ENSURE THAT YOUR USED **GRAIN BAGS** CAN BE ACCEPTED AND RECYCLED:

- **SHAKE:** REMOVE DEBRIS; GRAIN BAGS NEED TO BE AS CLEAN AS POSSIBLE WITH CARE TO REMOVE AS MUCH ORGANIC MATERIAL (SPOILAGE, DIRT, ETC) BEFORE OR DURING ROLLING. *EXCESSIVELY DIRTY OR LOOSE/UNROLLED BAGS MAY BE REJECTED OR SUBJECT TO A LANDFILL TIPPING FEE OR ADDITIONAL DROP OFF CHARGES.*
- **ROLL:** PREPARE GRAIN BAGS BY TIGHTLY ROLLING WITH A MECHANICAL GRAIN BAG ROLLER OR BALER AND THEN SECURING TIGHTLY WITH TWINE.
- **RETURN:** PLEASE CONTACT THE WAINWRIGHT REGIONAL LANDFILL AT 780-842-4051 PRIOR TO DROPPING OFF MATERIAL IF UNLOADING ASSISTANCE IS REQUIRED AND IF YOU ARE UNSURE IF YOU PREPARED THE MATERIAL PROPERLY.

FOLLOW THESE 3 STEPS TO ENSURE THAT YOUR **TWINE** CAN BE ACCEPTED AND RECYCLED:

- **SHAKE:** REMOVE AS MUCH DEBRIS, SNOW OR ICE AS POSSIBLE. *EXCESSIVELY DIRTY OR CONTAMINATED TWINE MAY BE REJECTED OR SUBJECT TO A LANDFILL TIPPING FEE OR ADDITIONAL CHARGES AT DROP OFF.*
- **BAG:** PLACE LOOSE TWINE IN A CLEAR COLLECTION BAG, POKE HOLES IN THE BOTTOM TO DRAIN MOISTURE AND SECURE BAG WITH TWINE OR A ZIP TIE. PLEASE DO NOT KNOT TWINE.
- **RETURN:** PLEASE CONTACT THE WAINWRIGHT REGIONAL LANDFILL AT 780-842-4051 PRIOR TO DROPPING OFF MATERIAL IF UNLOADING ASSISTANCE IS REQUIRED AND IF YOU ARE UNSURE IF YOU HAVE PREPARED MATERIAL PROPERLY.

TWINE COLLECTION BAGS ARE AVAILABLE AT NO COST TO THE PRODUCER AND CAN BE PICKED UP AT THE WAINWRIGHT REGIONAL LANDFILL.

**THIS PROGRAM IS OFFERED
IN PARTNERSHIP WITH
CLEANFARMS AND THE
AGRICULTURAL PLASTIC
RECYCLING GROUP**



Vegetation Management Program

It is that time of year again where you will see the Agricultural Services Department completing our roadside spraying program. Weed control is done on a 3 year rotation where roadsides are sprayed for prohibited noxious, noxious and general weeds once every 3 years. Brush spraying is done on a 2 year rotation where roads are spot sprayed once every 2 years for brush under 2m in height. Our staff continues to use selective herbicides according to label directions to ensure the health and safety of residents. Our weed inspectors continue to hold a current pesticide applicators licence through the *Alberta Environment Protection and Enhancement Act* which is the highest level of certification through the Alberta Government required to manage and apply pesticides.

Private landowners can request assistance when dealing with prohibited noxious and noxious weeds on pasture lands. A weed inspector will come out and inspect your property and if a prohibited noxious or noxious weed is identified we can assist with control (excluding Canada and sow thistle). The cost of the program is \$20.00 an hour plus the cost of herbicide. We will also work with you if you choose to administer control yourself. To follow public health measures put forward by Alberta Health Services regarding COVID-19 our weed inspectors will be following sanitization protocols and will be practicing physical distancing. Landowners will not be permitted to ride in M.D. vehicles and M.D. staff will not be permitted to ride in landowners vehicles.

A copy of our 2021 spray map has been included for your reference. The map is broken down into which roads will be controlled for brush and weeds. If you have any questions regarding the map you can contact Agricultural Fieldman James Schwindt or Assistant Agricultural Fieldman Tanis Ponath at 780-842-4454.

Below are pictures of common weeds found in the M.D. of Wainwright. We have available quick ID books that ratepayers can come to the main office and pick up.



First row (left to right): Leafy Spurge, Hoary Alyssum, Baby's Breath, Spotted Knapweed.

Second row (left to right): Nodding Thistle, Yellow Clematis, Orange Hawkweed, Scentless Chamomile

Third row (left to right): Diffuse Knapweed, Burdock, Common Tansy, Yellow Toadflax.

Control of Richardson Ground Squirrels

Richardson Ground Squirrel aka the prairie gopher, yellow gopher, flicker tail, picket pin or gopher is considered a nuisance pest under the *Agricultural Pest's Act*. There are 5 species of ground squirrels in Alberta. The Franklin's ground squirrel, Columbian ground squirrel, thirteen-lined ground squirrel, golden-mantled ground squirrel and the most common Richardson Ground Squirrel. Ground squirrels play an important role in the ecology of Alberta's wildlife. They are considered a major source of food for a variety of predatory birds, mammals and reptiles. The ferruginous hawk which is considered a Species at Risk depends entirely on ground squirrels to feed their chicks. Richardson ground squirrels spend the majority of their life underground, they hibernate for approximately 8 months during the fall and winter months. In the spring, they will mate and raise their litters for the first twenty eight days underground before emerging from their burrows. They do this to avoid predators and bad weather. They sleep from just before sunset to shortly after sunrise. Adults females own their own burrowing system. Each system has five to seven exits and two to five sleeping chambers. Vacated burrows can be used by badgers, foxes, coyotes or burrowing owls. Richardson Ground Squirrels live in groups of closely related female kin and they will only tolerate their own female relatives. Females will recognize their kin throughout their life, even after hibernating and going months without contact. They eat a variety of vegetation such as grasses, forbs and shrubs. They will occasionally eat insects and road-kill but will very rarely kill for their food. Natural mortality is quite high among Richardson Ground Squirrels. Only half of the females and one fifth of the males born each year will survive.

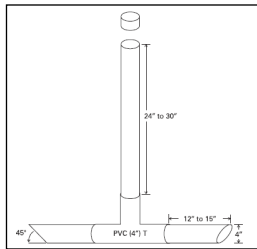
Damaged caused by Richardson ground squirrels varies significantly. The most common type of damage is crop loss through direct consumption of plants. There are a variety of control options that producers can implement to control populations. 2% Liquid Strychnine is a acute poison commonly used by M.D. of Wainwright producers to control their gopher populations; however, with the recent decision from PMRA to deregulate the product here are two readily available products that can be used by producers to control gopher populations.

Rozol:

Rozol is registered for control of ground squirrels and pocket gophers in rangelands, crop and non-crop areas. Made with feed-grade grain, this moisture resistant formulation contains the anticoagulant chlorophacinone.

Rozol RTU is a ready to use bait.



This is a commercial product only which means only certified pest control operators, farmers and person authorized in government pest control programs can access the product. Tier 1 bait stations must be used when using the product in residential areas, public areas, or any other sites that are or will be open to the public or in locations accessible to pets or livestock. In any other location, hand baiting is an acceptable application for Rozol. Rozol can be purchased at agricultural supply retailers like UFA.



RoCon:

RoCon is a poison free rodenticide registered by PMRA for the control of Richardson Ground Squirrel and Norway Rats. RoCon starts as a liquid concentration and is mixed with water inside an application tank. The mixture is pumped from the tank through an aeration nozzle causing it to foam. The foam expands and completely fills the burrows. The air inside the burrow is displaced and the rodent is forced to inhale the foam, causing it to quickly asphyxiate.

Visit www.roconrodentcontrol.ca for more information.

THE ORIGINAL GRAZING SCHOOL FOR WOMEN

WEBINAR INFORMATION

<p>June 9, 2021 7:00 p.m. - 8:30 p.m.</p>	<p><u>Fundamentals of Tree Establishment & Pest Control</u> Join Toso Bozic for a discussion about shelterbelts! You will gain a good understanding of how to establish trees as well how to identify major pest problems.</p>
<p>June 16 & 23, 2021 7:00 p.m. - 8:30 p.m.</p>	<p><u>Rural Dugout Two – Part Series</u> Presented by Shawn Elgert, Agricultural Water Engineer, Alberta Agriculture & Forestry. Learn about best practices for building and maintaining a dependable dugout during this two-part webinar series. Part 1: Dugout design, construction and operation systems. Part 2: Dugout water quality, treatments and dugouts for fish.</p>
<p>June 30, 2021 7:00 p.m. - 8:30 p.m.</p>	<p><u>Grazing Planning</u> In this interactive webinar, Kelly Sidoryk will review the principles of holistic planned adaptive grazing, talk about factors to consider and share the planning and monitoring process.</p>

To register, please visit <https://gsfw2021.eventbrite.ca> or visit www.grazingschool4women.ca

Managing Fusarium Head Blight

Fusarium graminearum is no longer a declared pest on the *Agricultural Pests Act*. The Fusarium Action Committee now called Fusarium Action AB was tasked with revising the Alberta Fusarium Management Plan. The action committee was comprised of Government and Agriculture Commodity groups to bring forward a unified approach to the management of Fusarium for Alberta’s producers. The new action plan is now available on the Agriculture and Forestry website (www.alberta.ca/alberta-fusarium-graminearum-management-plan.aspx). The Ag Services Department received a few calls this spring from producers looking for guidance when dealing with Fusarium since it is no longer a regulated pest. I reached out to the Alberta Wheat Commission and the Alberta Government for their recommendations.

Kelly Turkington: Plant Pathologist/Phytopathologist, Agriculture & Agri-Food Canada “Overall, in areas or fields (and adjacent fields) where the growers have not encountered *Fusarium graminearum* (Fg) they should be very cautious about using seed with any detectable level of Fg. On top of testing and avoiding seed with detectable levels of Fg they should use a good seed treatment to further cut the risk of inadvertently introducing the pathogen via seed. In areas where they have routinely encountered Fg in seed or grain and where they have had downgrading due to fusarium damaged kernels, there is less concern regarding detectable levels of Fg. The question is, is there an acceptable level. Typically one doesn’t encounter huge stand establishment issues due to Fg until you start to see moderate levels of seed infection (e.g. > 25%). In some countries (UK) seed treatment isn’t recommended until you have 10% infection with Fg. However, the first factor I would assess is the germination and vigour. If these are ok, i.e. >90% then the seed would be fine to use although a seed treatment would be recommended to reduce seed germination and stand establishment risks. Once you start to get germinations of less than 90% and especially below 80% then one should look at the fungal screen results. Here you may find increased levels of infection, likely well above 10%. Here one may want to look at an alternative seed source, especially if you have poor germination. If seed supplies are tight then perhaps use aggressive cleaning (to remove lighter weight Fg damaged kernels) and use of a good seed treatment applied with effective treatment technology (i.e. not a drip applicator into the hopper). Also note that one may have poor germination due to seed infection with the spot blotch fungus (*Cochliobolus sativus*), especially in barley, but the poor germination may also be due to other abiotic factors including excessive weathering and perhaps pre-sprouting in the mother crop (i.e. the crop from which the seed was produced). There is nothing wrong with seed with Fg infection in areas where this pathogen is well-established. Levels of 10% or less are likely fine, but make sure to check the germination results and follow up with a good seed treatment.”

Jeremy Boychyn; Agronomy Research Specialist, Alberta Wheat Producers. “If the farmer or surrounding neighbors/region have seen no fusarium damaged kernels (FDK) downgrading and no *Fusarium graminearum* (Fg) infection in their seed/grain in the past 4 years or so – it is recommended to use 0% infected seed when possible. If the farmer or surrounding neighbors/region have seen some downgrading, Fg infection in 20% of fields in the last 2-4 years, and routinely find ~1% infection in the last 2-4 years, try to use seed below 1-2% infection and use a seed treatment with fusarium on the label. Essentially, the less the farmer or region has seen Fg infection and FDK downgrading due to Fg, the higher risk the farm is at when using infected seed. If there are no other seed options – look for the lowest infection seed lot, clean seed if possible, and use labelled seed treatment.”

	Low risk	Moderate risk	High risk
Has your or a neighbour’s wheat been downgraded due to fusarium damaged kernels?	No	By a grade (e.g. CWRS #1 to a #2)	By more than a grade (e.g. #1 to #3)
Has <i>F. graminearum</i> been reported in your area	No to infrequently for more than four years	Up to 20% of the fields over the last two to four years	Routinely reported in >20% of the fields on an annual basis
Has <i>F. graminearum</i> been isolated from your or a neighbour’s seed/grain	No to <1% seed infection for at least four years or more	1-5% seed infection over the last two to four years	>5% seed infection found routinely

Am I at risk for *Fusarium graminearum*? (Table 1)

Image courtesy of Kelly Turkington (AAFC Lacombe).

Table 1